

# plan-design



KARCHER  
  
DESIGN

DESIGNS OF STEEL

# plan-design

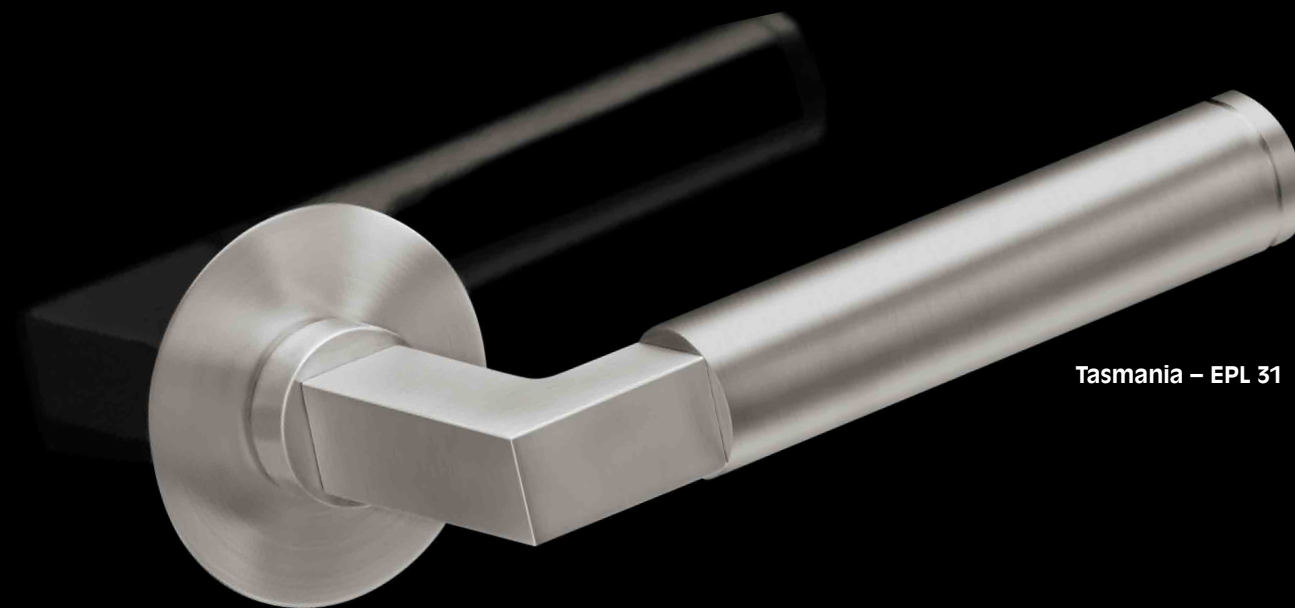
by KARCHER

A surface is described as plane when all points on this surface are in one layer. In this plane surface the PLAN DESIGN rose by KARCHER DESIGN sits flush. Therefore the rose keeps the perfect plane surface of the door. Most of KARCHER DESIGN lever models are available on this flush rose and are particularly easy to install.

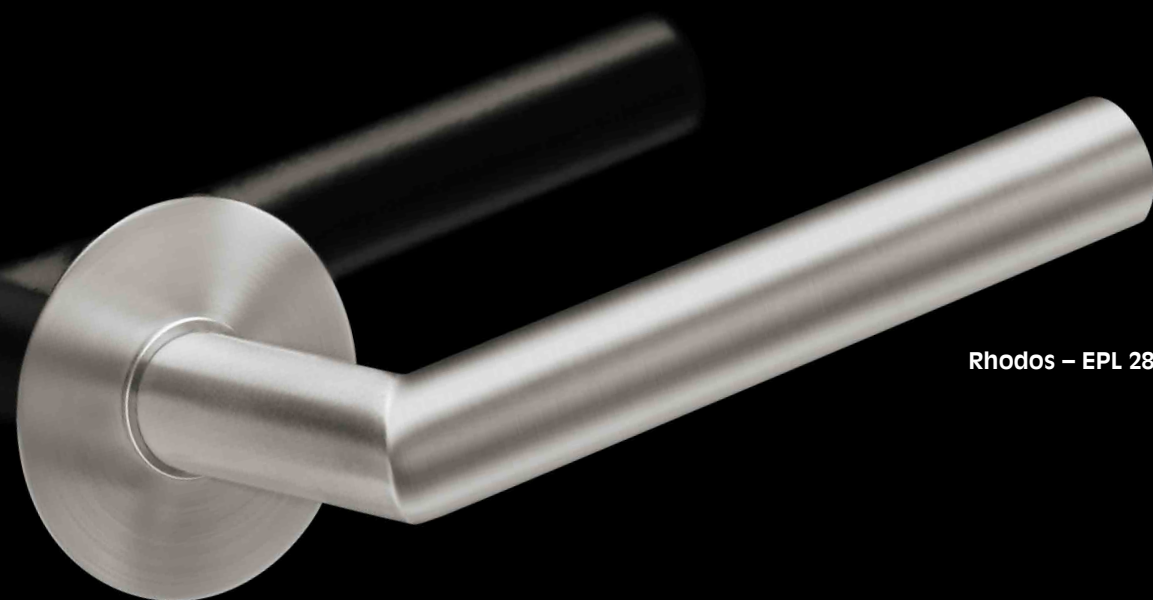
Like the complete KARCHER DESIGN product range the flush rose is also certified according to EN 1906 category of use 3 and can therefore be used in commercial and residential projects. Matching fire-resistant lever sets complete our product line. Beside the flush installation of the rose it is also possible to mount the rose on the surface of the door. This is possible without adapting the rose and can be decided individually by each customer. KARCHER DESIGN offers the PLAN DESIGN rose which is easy to be mounted surface flat.



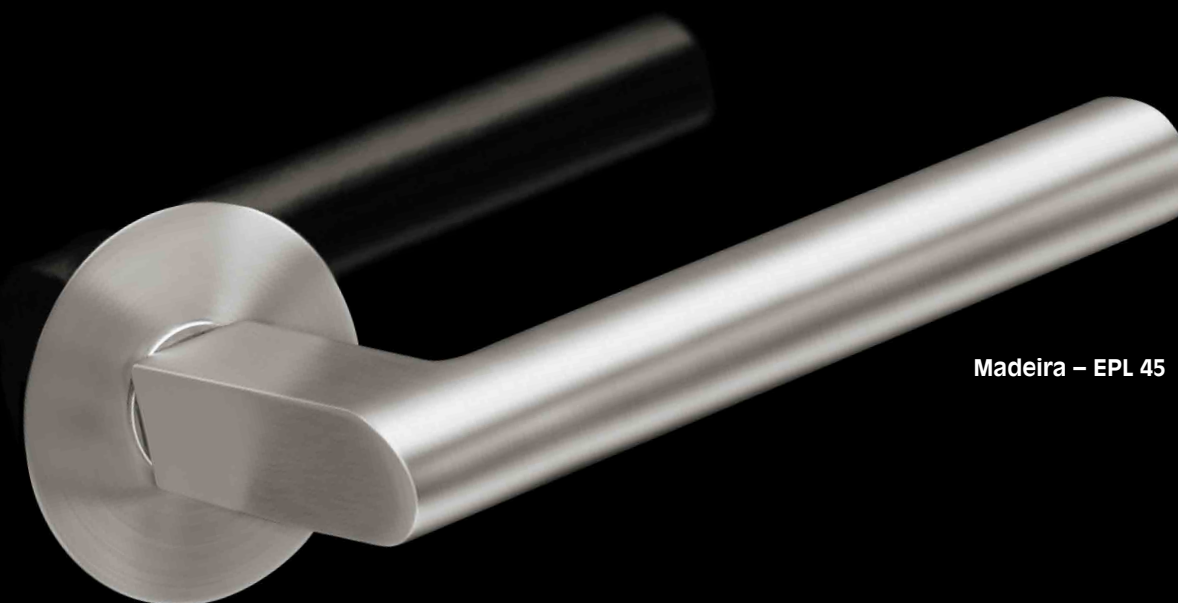
Elba – EPL 22



Tasmania – EPL 31

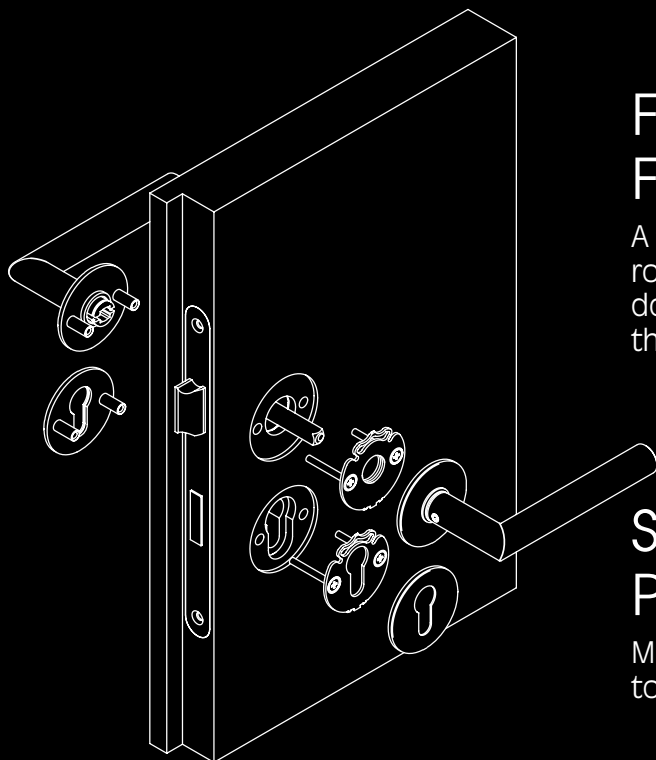


Rhodos – EPL 28



Madeira – EPL 45

## TECHNICAL INFORMATION

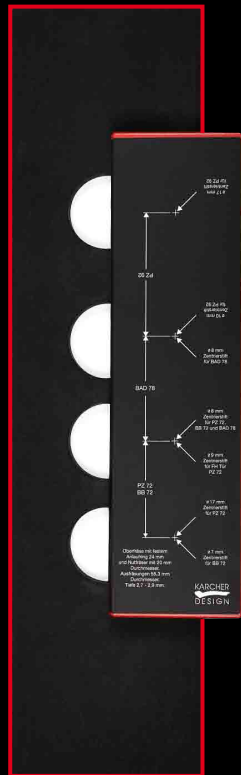


### FOR REBATED AND FLUSH DOORS

A flush mounting of the PLAN DESIGN rose is suitable for both rebated and flush doors. Rebated doors require a door thickness of at least 40 mm.

### SUITABLE FOR PROJECTS

Mortise lever handle certified according to DIN EN 1906 category of use 3.



### INSTALLATION

The installation is fast, precise and easy by using the KARCHER DESIGN milling template to countersink to holes into the door blank. The countersink holes need have a diameter of 55.3 mm and a depth of 2.8 mm. As an alternative the PLAN DESIGN rose can also be mounted on the surface of the door. For more information regarding the installation please have a look at [www.karcher-design.com](http://www.karcher-design.com)



Karcher GmbH  
Raiffeisenstraße 32  
74906 Bad Rappenau  
Tel. +49-(0)7264-9164-52  
Fax +49-(0)7264-9164-10  
mail@karcher-design.com  
www.karcher-design.com